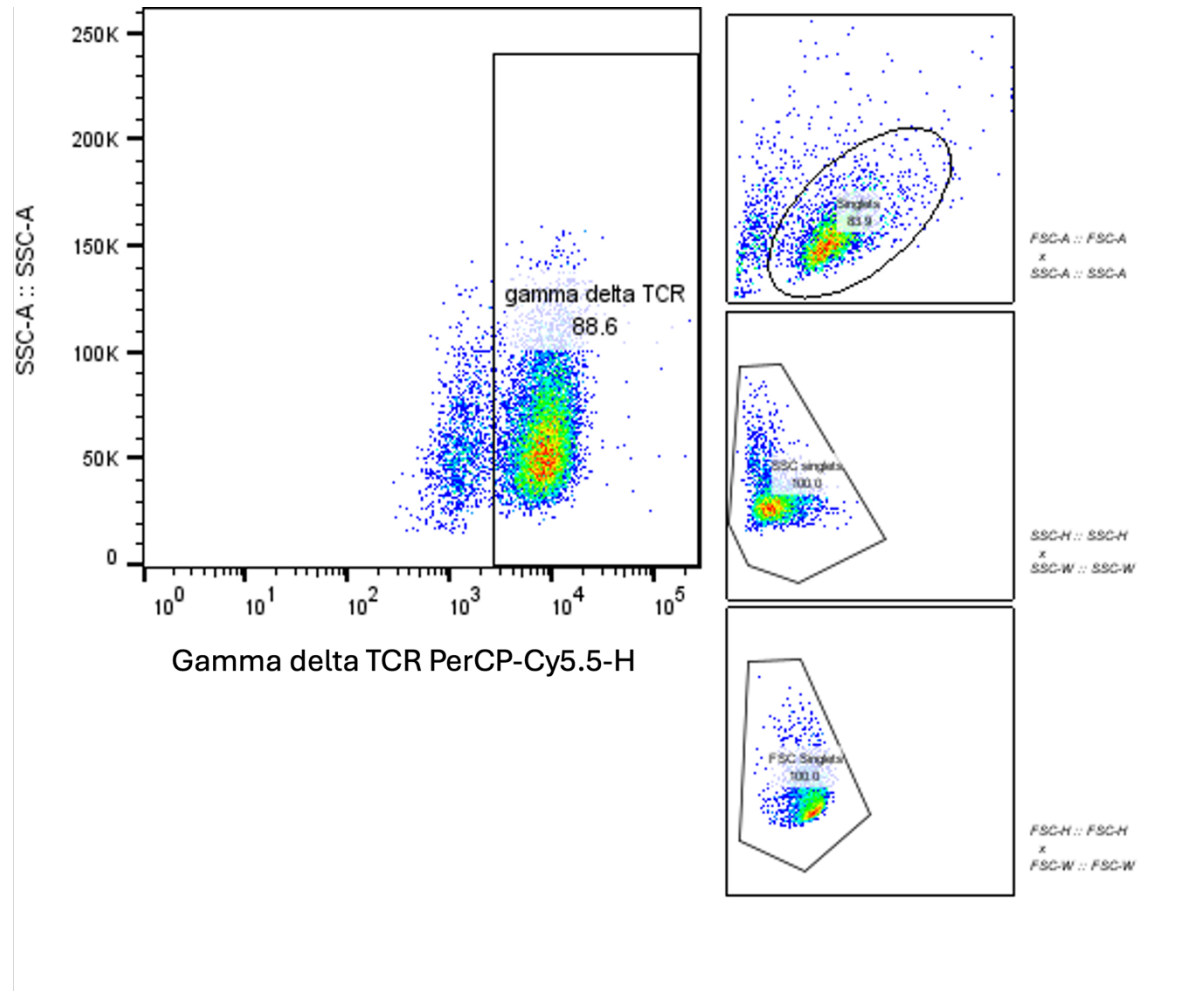


## Supplementary

Truong, N. C., Huynh, N. T., & Pham, P. V. (2026). Acetaminophen and Metformin Differentially Modulate  $\gamma\delta$ T Cell-Mediated Antitumor Activity and CSC-like Population Enrichment in the 4T1 Breast Cancer Model. *Biomedical Research and Therapy*, 13(6), 8663-8677. <https://doi.org/10.15419/bmrat.v13i6.1075>



**Figure S1. Flow cytometric assessment of  $\gamma\delta$ T cells composition prior to co-culture.**

Flow cytometric analysis showed a high proportion of  $\gamma\delta$ T cells (TCR gamma/delta<sup>+</sup>, 88.6%) exceeding the quality threshold for *in vitro*-expanded  $\gamma\delta$ T cell products.